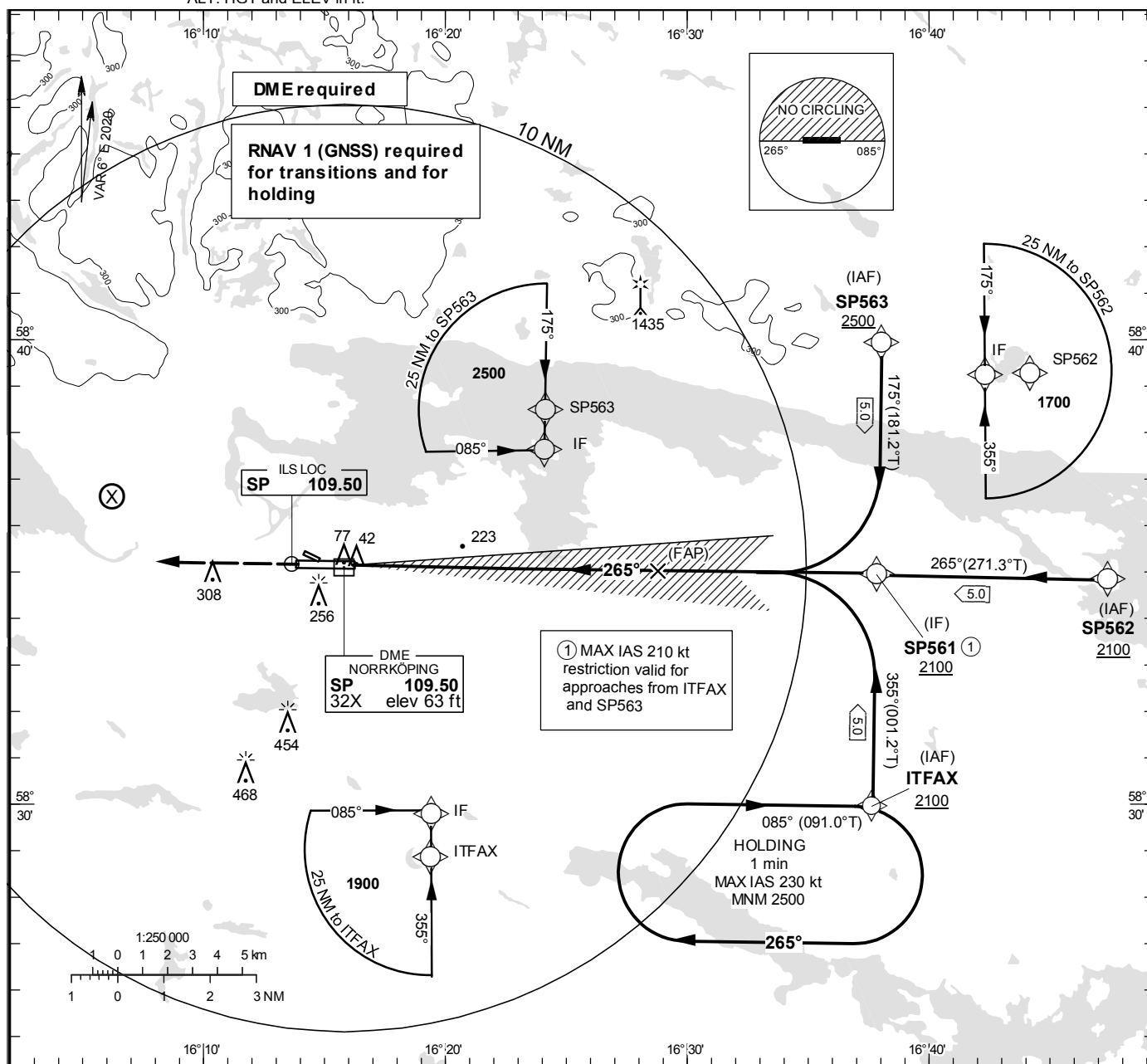


INSTRUMENT
APPROACH
CHART – ICAO

THR ELEV 32.3 ft, AD ELEV 32 ft
OCH are related to THR.
Circling OCH are related to AD ELEV.
BRG are MAG
ALT. HGT and ELEV in ft.

KUNGSÄNGEN TOWER 120.355
ÖSTGÖTA APPROACH 132.955



TA 5000 ft AMSL RDH 49.9 ft *Timing not authorized for defining the MAPt

OM replaced BY SP DME 4.0
MM replaced BY SP DME 0.8

CLIMB STRAIGHT AHEAD TO 2500,
RADAR VECTORED FOR A NEW APPROACH.

See chart

LOC
FAF at SP DME 6.5 2100
MAPt at SP DME 0.8
Descent grad. 5.2%

OCA (H)					Final approach		LOC Distance FAF-MAPt 5.7 NM*				
Cat of ACFT	A	B	C	D	DME SP NM		2	3	4	5	6
Straight-in Approach	CAT I	181 (148)	189 (156)	199 (166)	210 (177)	ALT	660	980	1300	1620	1940
	LOC	470 (440)				GS	kt	80	100	120	140
Circling S RWY		560 (530)	620 (590)	860 (830)	880 (850)	Time	min:s	4:18	3:26	2:52	2:27
						Rate of descent	ft/min	425	530	635	745
										850	955

CHANGE: Editorial